



BEYOND INFINITE
SEALS TRADING LLC

— CATALOG —

Reliable sealing solutions for pumps, compressors and rotating equipment in oil & gas, water, power, marine, chemicals and manufacturing across the UAE.





AT BIS WE DELIVER HIGH-PERFORMANCE SEALING SOLUTIONS, ENGINEERED WITH PRECISION TO WITHSTAND THE TOUGHEST INDUSTRIAL ENVIRONMENTS.

PRECISION

Metallic Steel Balls
Ferrous Metal Steel Balls
Non-Ferrous Metal Steel Balls
Ceramic Balls
Glass Balls



SHEETS, RODS AND TUBES

Polytetrafluoroethylene (PTFE)
Polyether ether ketone (PEEK)
Polyoxymethylene (POM)
Polyamide (PA)
Polypropylene (PP)
Polyethylene Terephthalate (PET)
Polyvinylidene Fluoride (PVDF)
Ultra-High Molecular Weight Polyethylene (UHMW)
Phenolic



INDEX of MATERIALS

Metallic Steel Balls

Built for high-load mechanical systems to support stable movement and consistent performance under continuous stress.



Ferrous Metal Steel Balls

Suited for heavy-duty applications requiring magnetic properties, strength, and dependable operation in demanding environments.



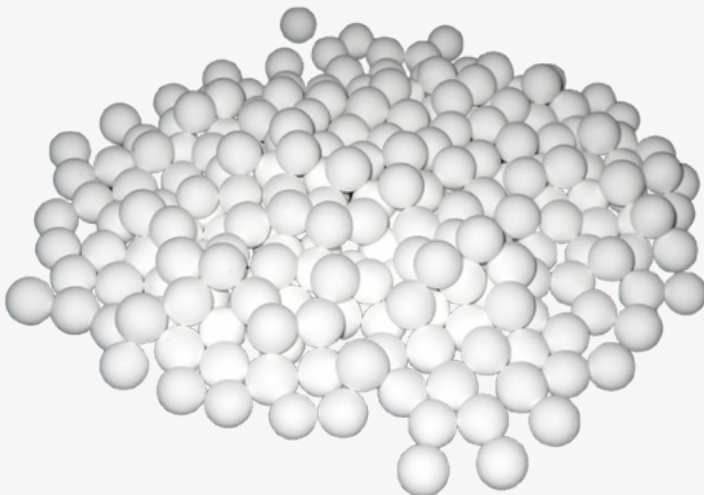
Non-Ferrous Metal Steel Balls

Ideal for assemblies where corrosion resistance and non-magnetic behavior are essential for smooth and reliable motion.



Ceramic Balls

Engineered for high-speed and high-temperature systems where low friction and long service life are critical.



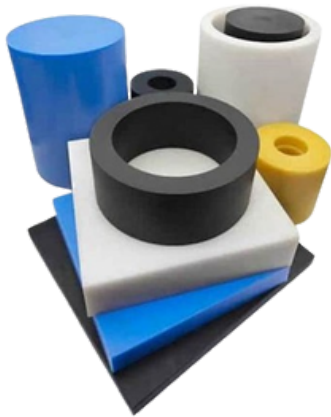
Glass Balls

Engineered for high-speed and high-temperature systems where low friction and long service life are critical.



Polytetrafluoroethylene (PTFE)

Developed for chemically aggressive environments to minimize friction and maintain stable performance across wide temperature ranges.



Polyether ether ketone (PEEK)

Designed for advanced engineering applications demanding exceptional strength, heat resistance, and precision stability.



Polyoxymethylene (POM)

Optimized for mechanical components requiring rigidity, low friction, and accurate dimensional control.



Polyamide (PA)

Chosen for applications needing toughness and wear resistance while reducing noise and vibration during operation.



Polypropylene (PP)

Well-suited for lightweight systems exposed to moisture or chemicals, offering durability without added mass.



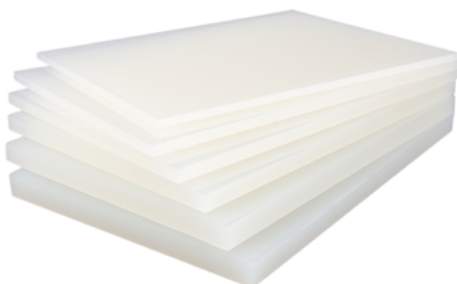
Polyethylene Terephthalate (PET)

Formulated for applications requiring strength, wear resistance, and consistent performance under mechanical load.



Polyvinylidene Fluoride (PVDF)

Intended for harsh chemical and thermal conditions where material integrity and reliability are essential.



Ultra-High Molecular Weight Polyethylene (UHMW)

Crafted for extreme abrasion and impact environments to ensure smooth motion and extended service life.



Phenolic

Designed for electrically insulating and heat-resistant applications where structural stability is required.





BEYOND INFINITE

SEALS TRADING LLC

Engineered For Perfection.



+971 52 253 6549 | +971 52 195 8564



beyondinfinitetrading@gmail.com | import.bis@outlook.com